

March 4, 2024

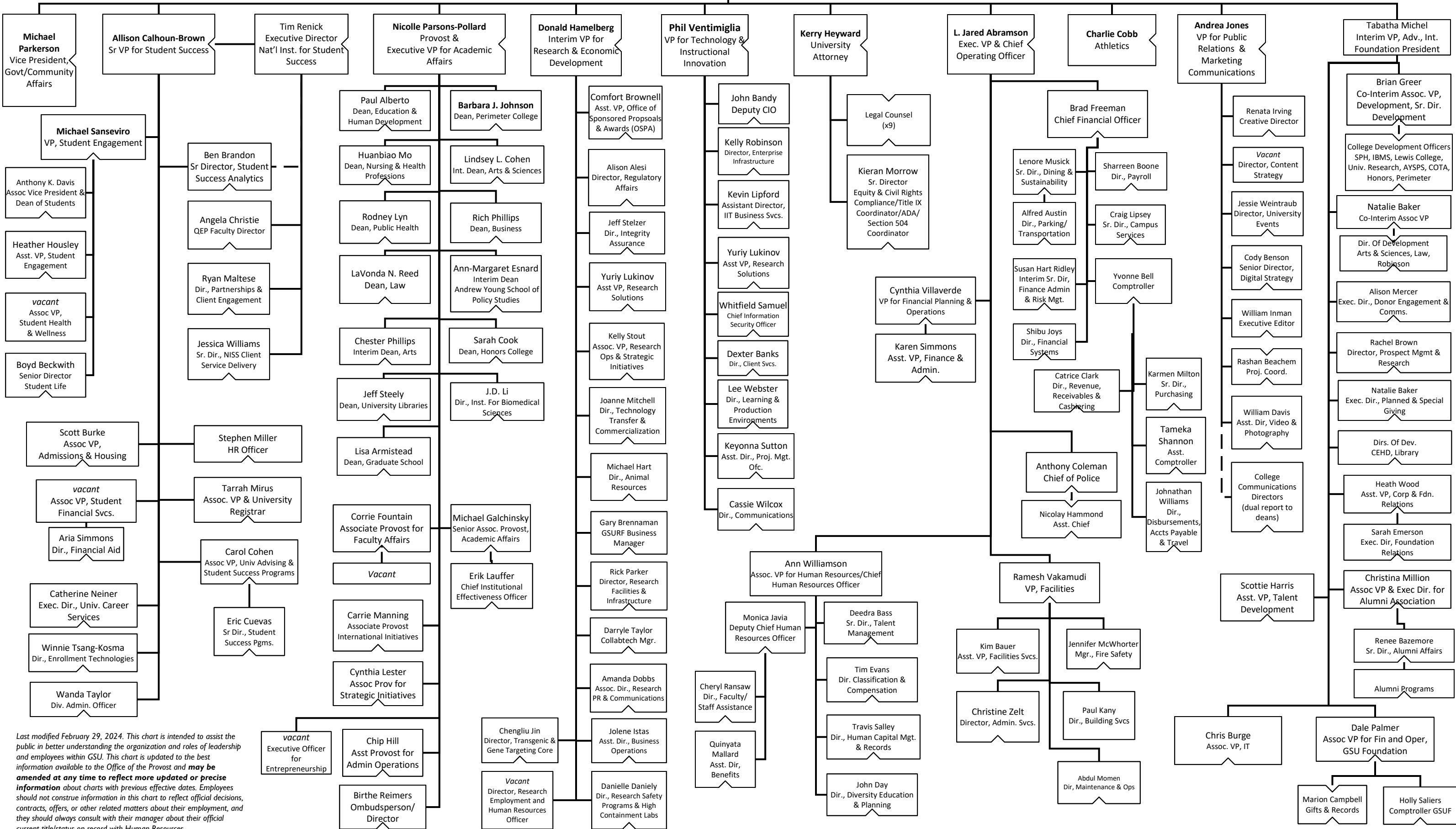
*Names in bold represent members of the President's Cabinet.*

University Senate

Ann Williamson  
Interim Chief of Staff

**M. Brian Blake**  
President

Wanda Lynn Riley  
Chief Auditing Officer



Last modified February 29, 2024. This chart is intended to assist the public in better understanding the organization and roles of leadership and employees within GSU. This chart is updated to the best information available to the Office of the Provost and **may be amended at any time to reflect more updated or precise information** about charts with previous effective dates. Employees should not construe information in this chart to reflect official decisions, contracts, offers, or other related matters about their employment, and they should always consult with their manager about their official current title/status on record with Human Resources.